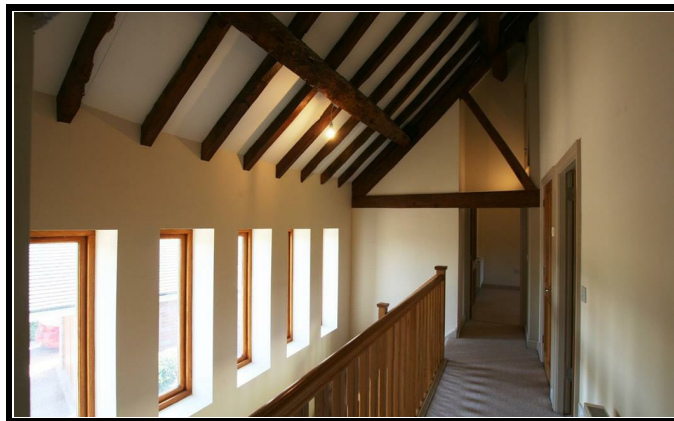


Allan Morris

estate agents



Allan Morris Worcestershire Limited. Registered in England and Wales. Company Number 7151279
Registered Office: Sidbury House, 32 Sidbury, Worcester, WR1 2HZ

01905 612266

allan-morris.co.uk
worcester@allan-morris.co.uk



Greenhill Farm Barns, Greenhill Lane, Hallow, Worcester

A beautifully presented, detached barn conversion, situated in a gated community of just 4 barns. This property has versatile accommodation over 2 floors comprising of: a large dining hall with stairs to the 1st floor, door to the sitting room, double opening doors onto the garden and opening into the kitchen and an under stairs storage cupboard. The Bespoke kitchen has a central island with an integral wine fridge and storage with granite work tops.



£2,400 PER MONTH

01905 612266

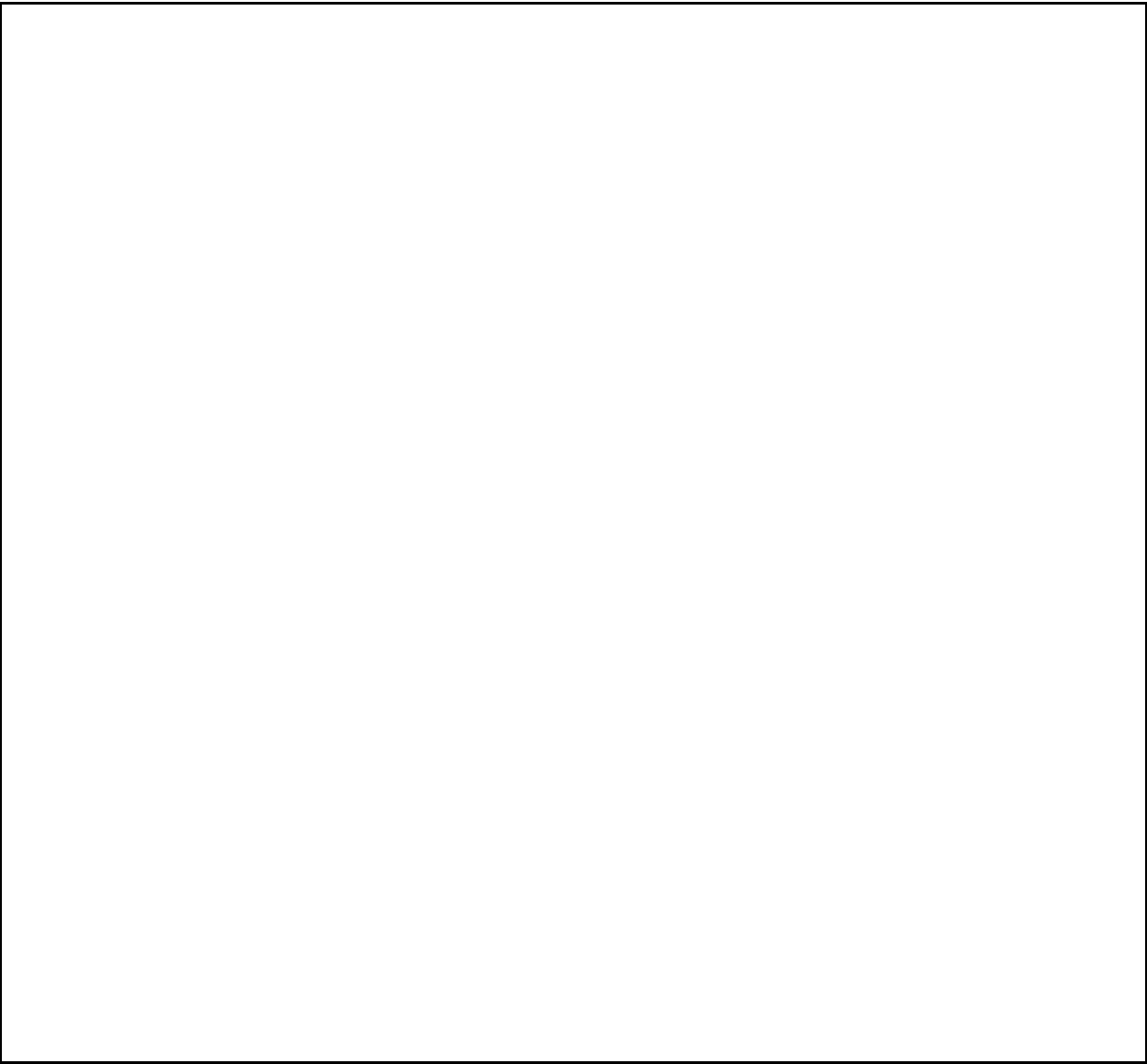
allan-morris.co.uk
worcester@allan-morris.co.uk



Details Approved
Signed
Print
Date

1, Greenhill Farm Barns, Greenhill Lane, Hallow, Worcester, WR2 6LG

All measurements are approximate. Accommodation in more detail comprises:



GENERAL INFORMATION

Whilst we endeavour to make our sales particulars fair, accurate and reliable, they are only a general guide to the property. Accordingly, if there is any point which is of particular importance to you please contact the office and we will be pleased to check the position for you, especially if you are travelling some distance to view the property. MEASUREMENTS: Our quoted room sizes are approximate and intended for general guidance, you are particularly advised to verify all the dimensions carefully. TENURE: We understand the property is offered for sale FREEHOLD. FIXTURES AND FITTINGS: All items not specifically mentioned within these details are to be excluded from the sale. SERVICES: Any mention of services/appliances within these details does not imply they are in full and efficient working order. We have not tested these, or any equipment in the property. Allan Morris Worcestershire will not be liable, in negligence or otherwise, for any loss arising from the use of these particulars.

ROUTE TO THE PROPERTY: